



XingYue Communication Technology Co., Ltd.

Product Name: LTE Log Periodic Antenna

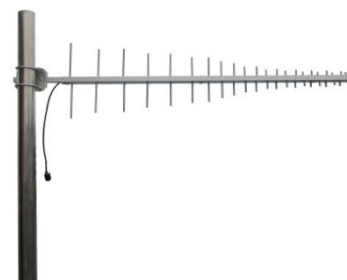
Product Model: XY114609

Electrical Specifications

Frequency Range	698-960MHz	1710-2700MHz
Polarization Type	Vertical	
Gain	8.5±1dBi	11±1dBi
VSWR	≤1.6:1	≤1.5:1
Horizontal Beamwidth	70° ±8°	55° ±10°
Vertical Beamwidth	55° ±8°	45° ±10°
Front-to-back Ratio	≥14dB	≥15dB
Input Impedance	50 Ω	
Max Power	150W	
Lightning Protection	DC Ground	

Mechanical Specifications

Connector Type	N Female
Dimensions (L*W*H)	899*220*38mm(35.4*8.7*1.5in)
Radiating Element Material	Aluminum
Reflector Material	Aluminum
Weight	0.75kg
Mounting Pole	φ 30~52 mm
Cable	RG58
Operating Temperature	-40°C~60°C

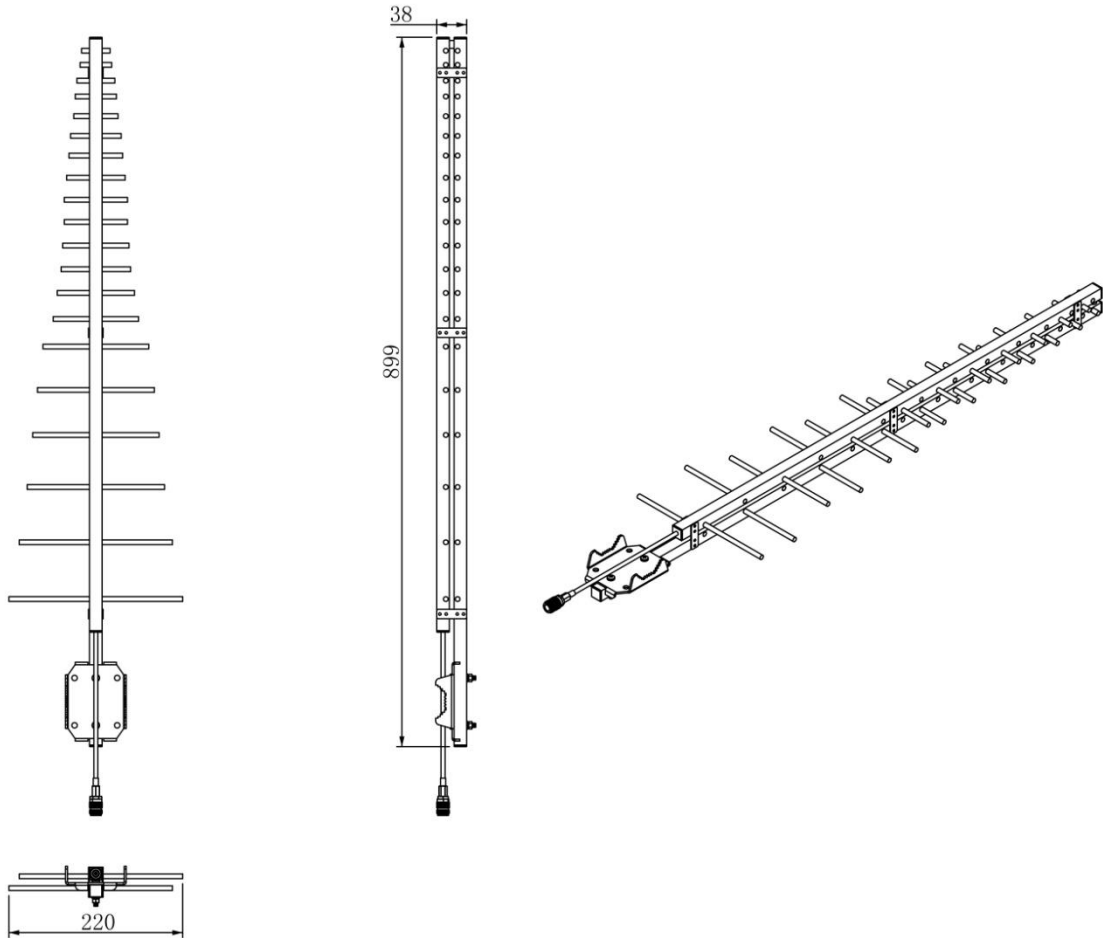


Add: No.11 GuangMing new RD, DongCheng area, DongGuan City, China
Tel: +86 - 769-22333955 Fax: +86 - 769-22000020
E-mail: xingyue@xytx86.com Website: <http://xytx86.com>



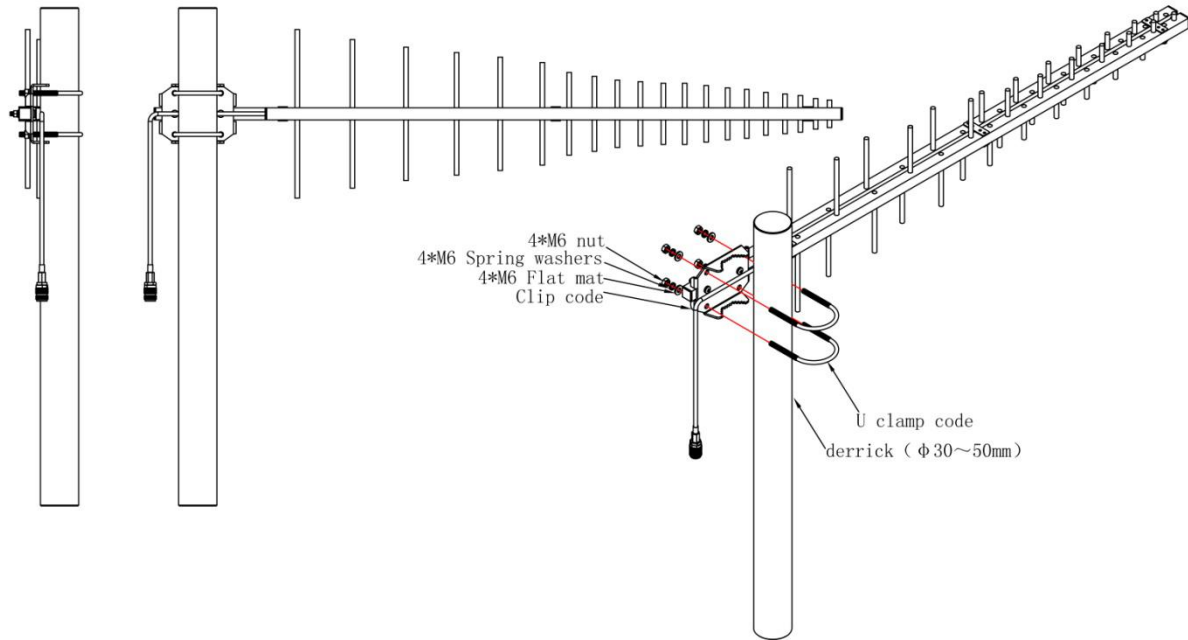
XingYue Communication Technology Co., Ltd.

Product Diagram:

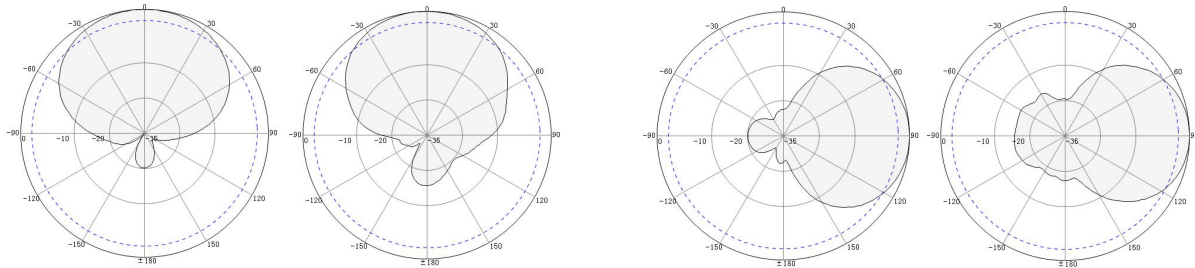


Add: No.11 GuangMing new RD, DongCheng area, DongGuan City, China
Tel: +86 - 769-22333955 Fax: +86 - 769-22000020
E-mail: xingyue@xytx86.com Website: <http://xytx86.com>

Installation Guide:



Directional Pattern:



800MHz-H

800MHz-V

2200MHz-H

2200MHz-V

PS:

H: Horizontal Pattern

V: Vertical Pattern